

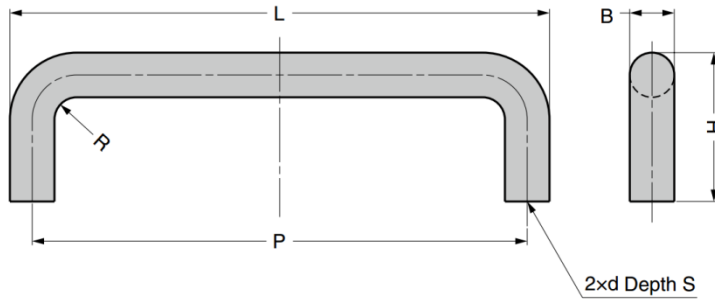
GH-42-C Stainless Steel Handle

Features

- Optional bracket **GH-42-Z** and components to install to aluminium frame are available
- Titanium material option of size similar to **GH-42-C-2**, **GH-42-C-4** and **GH-42-C-15** are also available

Material

- Stainless steel 304, polished

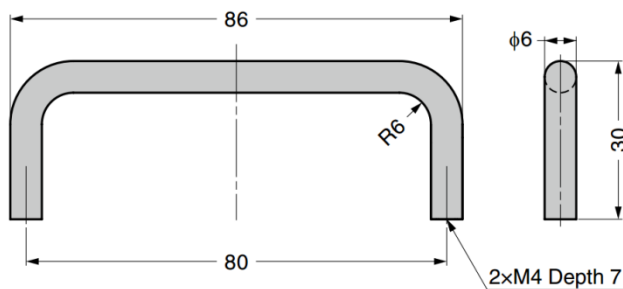


Part No.	L	H	B	P	R	d	S
GH-42-C-8	66	22	6	60	3	M4	7
GH-42-C-14	86	30		80			
GH-42-C-1	75		68	3.5	8		
GH-42-C-2	109		9	4.5			
GH-42-C-3	120	40	10	110	5	M6	
GH-42-C-4	130			120			
GH-42-C-15	162	50	12	150	6	M8	10
GH-42-C-5	200			188			
GH-42-C-6	250			238			
GH-42-C-7	300			288			

GH-42-F14 Stainless Steel 316 Handle

Material

- Stainless steel 316, polished



Part No.
GH-42-F14